



HPLATE

MARINE KEYBOARDS



This installation manual has been written by the manufacturer and it is considered integrating part of this product.

The information included are intended for the expert technicians who execute the installation and the extraordinary maintenance of the product.

The expert technicians must have specific competences and particular abilities in order to carry out correctly and safely their work.

The constant observance of the information included in this manual guarantees safety of men, energy serving and a longer duration of product operative-life.

In order to avoid wrong handling and the consequent risk of accidents, it is important to read this manual carefully, keeping scrupulously to guidelines according to the supplied information.

CONTENTS

DESCRIPTION	PG 4
FEATURES	PG 4
TECHNICAL SPECIFICATIONS	PG 5
MODULE DESCRIPTION	PG 6
INSTALLATION	PG 9
WIRING DIAGRAMS	PG 11
PROBLEM SOLVING	PG 13
REPAIR AND WARRANTY POLICIES	PG 15

CONFORMITY DECLARATION

All the devices of the YACHTICA® system are designed in order to comply the directive **EN 60945 Maritime navigation and radiocommunication equipment and system**.

All the devices of the YACHTICA® system are tested and found to comply with the specification of the CE marking.



All brand names, product names and trademarks are property V.Y.C. Srl.
©2020 V.Y.C. Srl



DESCRIPTION

H/Plate® is the perfect companion to the EasyBUS system. Designed to guarantee the maximum appeal to the end user, they are available with single and double buttons, neutral or with icons, singularly removable even after the complete installation. This delivers total flexibility to the final customer up to the very last phases of the system handover or even later during refit. The careful shape, electronic and design study allows to reduced size and total adaptability with a vertical and horizontal installation. The H/Plate®s are mounted on Yachtica®s 502 and 503 frames with magnets allowing an easy access to the wiring and maintenance. The Formal Coating treatment on electronics provide high reliability in marine environment.

Using the simple BUS wiring, the H/Plate® is addressable as any other module of the EasyBUS system and can be programmed by Yachtica®s Cabot software.

The H/Plate® dry contacts series has been designed for all smart lighting control systems.

FEATURES

8/4 Dry contact push buttons

The HPLATE provide up to 8/4 dry contact (HPLATE8/HPLATE4), configurable according to the chosen layout.

8/4 Feedback LEDs

Each button have a feedback LED available. In the BUS version the On/off of those leds can be programmed by Yachtica software Cabot. In the passive version, feedbacks are momentary during the press of each button. It is possible to have a backlight, activated by Cabot on the BUS version and by a jumper in the passive version.

EasyBUS communication (only on BUS version)

The HPLATE with BUS are able to communicate with other devices of the YACHTICA® automation system when connected inside an EasyBUS network. The removable EasyBUS connecting block is used to link the module to the other modules of the same EasyBUS network.

Cabot programming software (only on BUS version)

The module can be programmed, managed and monitored using the YACHTICA® software Cabot.

Magnetic fixing on Yachtica frame

The HPLATE8/4 is fixed by 4 magnetics on a Yachtica 503/502 frame, reducing the space but with a strong hold.

Tropicalized electronic

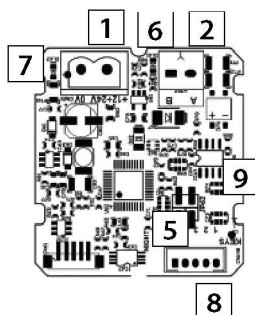
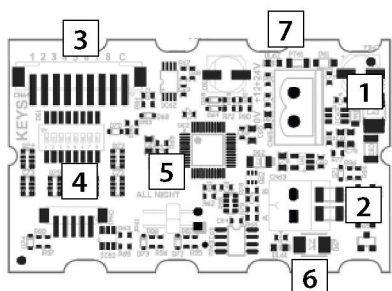
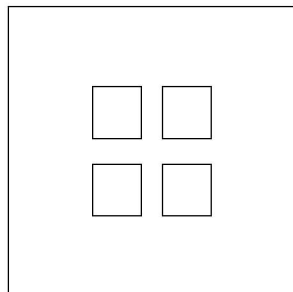
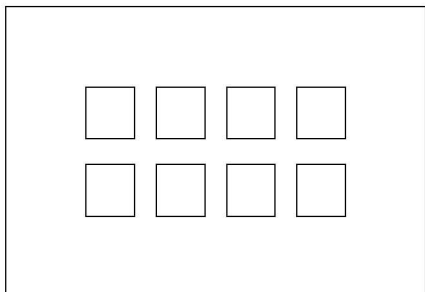
All the YACHTICA® modules have a tropicalization treatment in order to prevent a deterioration due to the humidity and sea mist.

TECHNICAL SPECIFICATIONS

SPECIFICATION	DETAILS
Electronic power supply	11-28V _{DC}
Electronic requirements	0,6W (20mA @24V _{DC} , 40mA @12V _{DC})
Number of dry contact inputs	8/4
Default address (only on BUS version)	32
Working temperature	+5°/+50° C (41°/122° F)
Storage temperature	-40°/+70° C (-40°/+158° F)
Humidity	15%/90% non condensing
IP Protection	IP20
Dimensions (LxAxP)	HPLATE 8: 120x80x60 mm HPLATE 4: 80x80x60 mm
Weight	84 g
Compliance	CE: EN60945; EN61000-4-2; EN61000-4-3; EN61000-4-4; EN61000-4-5; EN61000-4-6; EN61000-4-11; CISPR 16-1-1;



MODULE DESCRIPTION



#	CONNECTORS, LED, INDICATORS	DESCRIPTION
1		2 poles detachable connector; Maximum cable section: 2,5mm ² (12AWG); Electronic power supply connector; +: positive 11-28V _{DC} ; C: negative 11-28V _{DC} . Be sure that all the negative poles of all the power supplies used for electronic are in parallel. NOTE: it is suggested to use a dedicated stabilized power supply for the electronic of all the modules inside an EasyBUS network. NOTE: in case the backlight is not needed the plate could not be powered
2		2 poles detachable connector; Maximum cable section: 1,5mm ² (15AWG); EasyBUS connector; A: BUS A pole; B: BUS B pole. Be sure that cabling of BUS connector is consistent for all the modules in the network. This avoid bad working of the system.
3		(ONLY 8 BUTTONS VERSION) 9 poles detachable connector; Buttons patch connector; Red: common; Orange: button 1; Yellow: button 2; Green: button 3; Blue: button 4; Purple: button 5; Grey: button 6. White: button 7; Black: button 8. Note: in the HPLATE8 BUS version, in order to use these contacts, select the corresponding dip switches to avoid any bad working functi
4		(ONLY 8 BUTTONS VERSION) DIP switches to be used with an external system. If OFF, the corresponding dry contact is available to external. This contac is not usable on the BUS anymore. If ON the contact is available on the BUS.



INSTALLATION

Important notes

The following information are intended for the expert technicians who execute the installation and the extraordinary maintenance of the product. The installation and the maintenance of the module must be executed by qualified technicians, respecting the Norm of the installation country.

The expert technicians must have specific competences and particular abilities in order to carry out correctly and safely their work.

The constant observance of the information included in this manual guarantees safety of men, energy saving and a longer duration of product operative-life. Keep this manual and notes included.

In order to avoid wrong handling and the consequent risk of accidents, it is important to read this manual carefully, keeping scrupulously to guidelines according to the supplied information.

Electrical tension may cause shock and severe burns. Be sure to turn off the electrical supply before carrying out any type of work on the connectors. Omission of observation of these safety measures may cause death or severe lesions to people as well as great material damages.

Before preceeding with the use of the modules, make sure that electric installation, carried out by a qualified technician in conformity with the Technical Norms, corresponding to the class of homologation of the electrical system, is provided with the devices prescribed for the protection against direct and indirect contacts and electrical surcharges.

The modules of the YACHTICA® must be exclusively used in connection with other modules and external components which are conformed to the Norms comparative to the product.

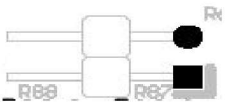


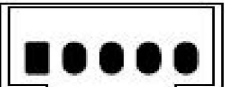

Do not use the module if, upon visual inspection, it shows deterioration of the enclosing box or if the screening wraps of the feeding cables show any wear and tear or damage.

The YACHTICA® system may not be used to carry out safety and accident prevention functions since it does not have the redundancy requirements lawfully requested.

The installer must verify the correct installation and operation of the product.
It is prohibited to use the product for improper purposes or purposes different from those provided

V.Y.C. Srl shall not be held liable for any damage of any sort or kind in case of module used or installed incorrectly.

It is prohibited to tamper or to modify the product.

#	CONNECTORS, LED, INDICATORS	DESCRIPTION
5		(ONLY PASSIVE VERSIONS) Jumper ALL NIGHT. It is mounted on Passive versions of both HPLATE, 8 and 4 buttons. If insert, it activates the backlight on every button.
6		(ONLY BUS VERSIONS) Orange LED, BUS. <i>LED Blinking:</i> the module is connected to other modules in an EasyBUS network and is not the master module. Blinking frequency depends on the address of the module; <i>LED On:</i> the module could be the master of an EasyBUS network or could fail to communicate with the rest of the network ⁽²⁾ .
7		Green LED, PWR. On if electronic power supply is given.
8		(ONLY 4 BUTTONS VERSIONS) 5 poles detachable connector; Buttons patch connector; Red: common; Orange: button 1; Yellow: button 2; Green: button 3; Blue: button 4; Note: in the HPLATE4 BUS version, in order to use these contacts, select the corresponding dip switches.
9		Button link jumper; According to the layout of the HPLATE, if jumpers are in, it links the corresponding contact in case one or more double buttons are used.



Before starting

Always switch off the electronic power supply before carrying out any type of electrical connection on the module.

NOTE: use a dedicated stabilized power supply for electronic modules installed in an EasyBUS network. If into an EasyBUS network more than one power supply are used, be sure that all the negative poles of all the power supplies are in parallel.

The module is intended for internal use. Install it in dry place in order to respect the specifications described in the TECHNICAL SPECIFICATIONS paragraph of this manual.

Addressing (only BUS versions)

Each YACHTICA® module placed into an EasyBUS network must have a unic address. The default address for all YACHTICA® modules is 32 and Max Address 33. Before connect the BUS connectors of more modules in the same net, be sure that they have a different address. It is possible to address the module using the display.

It is possible to change the address of a module using the YACHTICA® programming software Cabot.

NOTE: a module cannot communicate with other modules in the same net if its Address is upper than the Max Address of the others (see Cabot manual).

Surf the following link to download the software:
<http://yachtica.com/>

Programming with Cabot

The module can be programmed using the YACHTICA® software Cabot. Read the manual of the software for all the information needed about Cabot and the module programming.

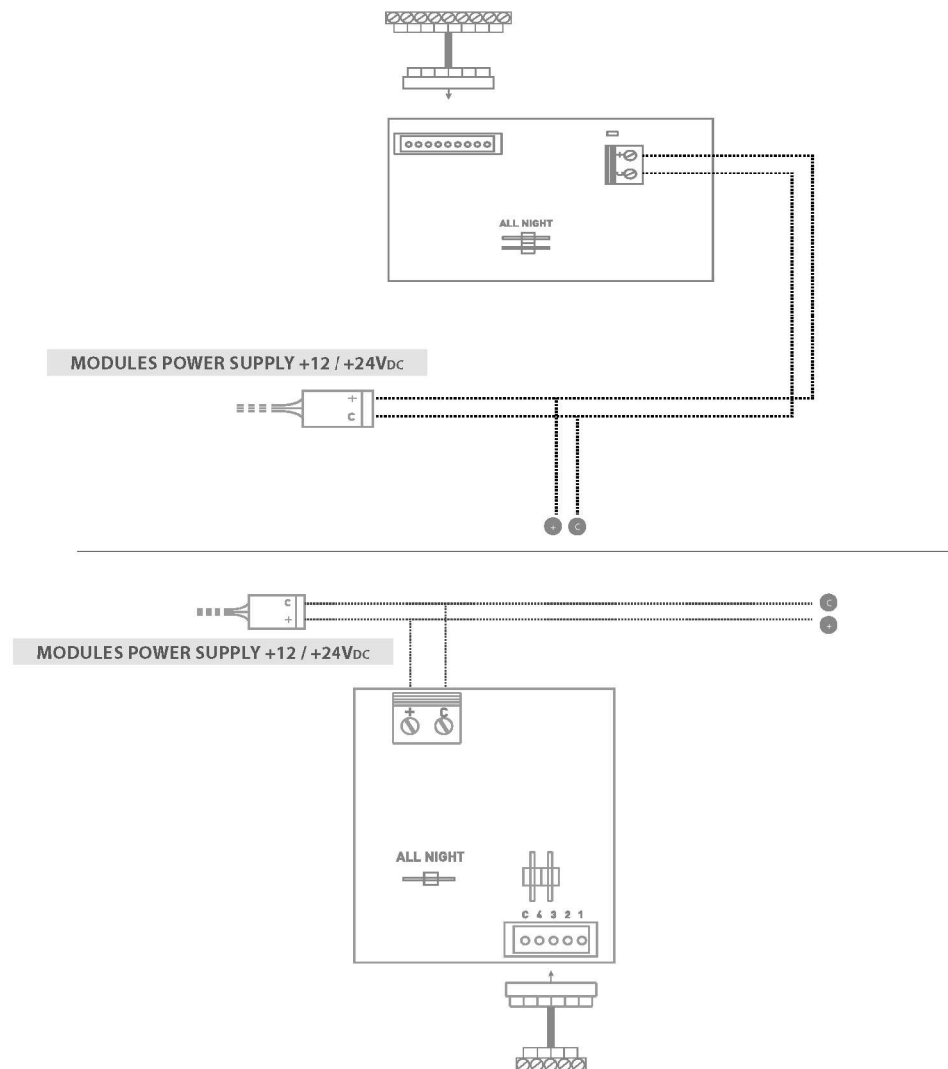
For programming examples surf the link www.yachtica.com

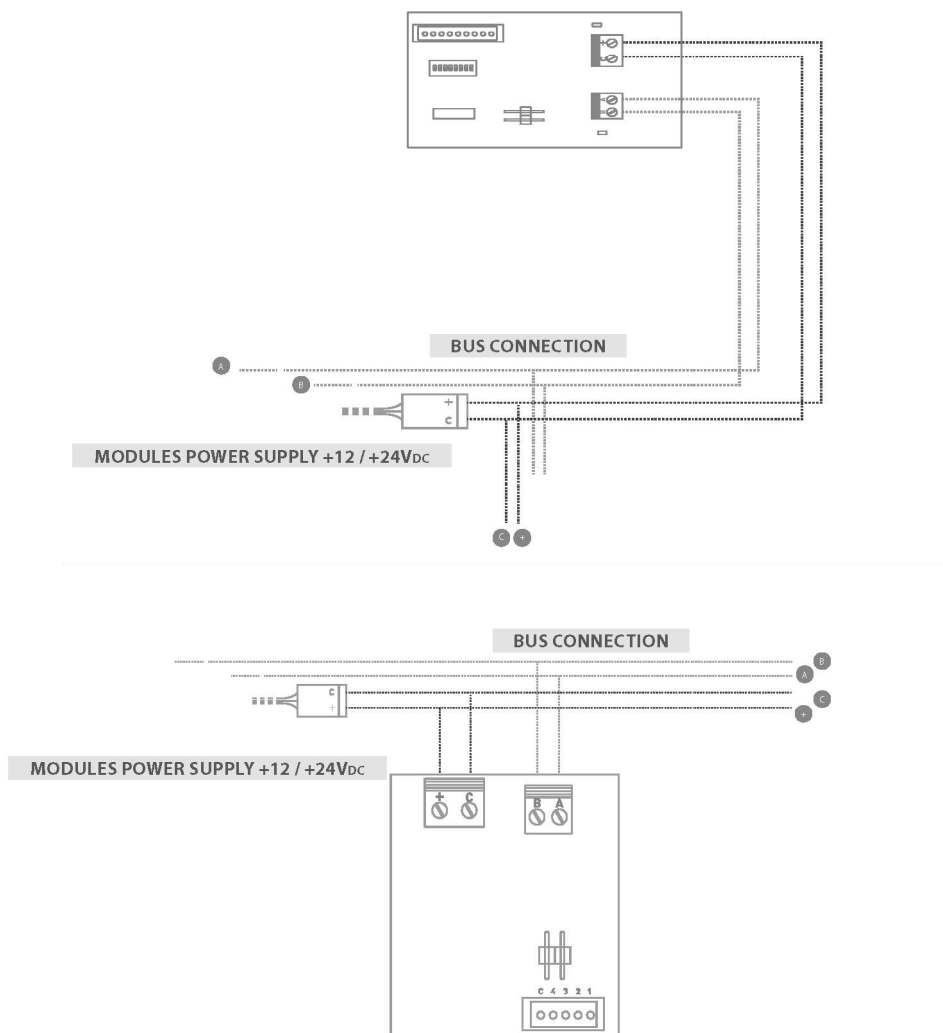
For advanced programming requested contact YACHTICA® technical department if needed.

WIRING DIAGRAMS

Shown below different wiring diagrams that can be used when installing a HPLATE.

SCHEME 1: Stand alone wiring with backlight



**SCHEME 2: Wiring with BUS****PROBLEM SOLVING**

PROBLEM	POSSIBLE CAUSE	POSSIBLE SOLUTION
Module does not switch on	The module doesn't receive power supply on the electronic power supply connector	Check that dedicated power supply is working properly, providing right output voltage according to the specifications written in this manual.
	Positive and negative cabling poles inverted	Check that dedicated power supply positive and negative poles are connected in the right way.
The module is switched on but buttons do not work	HPLATE8 BUS: dip switches set ON	Check that the corresponding dip switch is set OFF.
	HPLATE 8/4 passive: wrong wiring	Check the patch cable is correctly put in and the wiring on the external system is correct
	HPLATE 8/4 BUS: BUS doesn't work properly	Check the wiring of BUS connector
The module has the BUS LED always on but its address is not the lowest used in the network	The modules has address higher than the MAX ADR of the module with lowest address in the network	Check the MAX ADR value of the module with lowest address in the network. Set the address of the module according to that value.
	Problem on the BUS cable	Check the cabling of all the BUS chains connected to the same loop of the module. Short circuit or inversion on A-B poles can be present.



NOTE

REPAIR AND WARRANTY POLICIES

Merchandise returns

No V.Y.C. Srl merchandise may be returned for credit, exchange or service without prior authorization from V.Y.C. Srl. To obtain warranty service for V.Y.C. Srl products, contact V.Y.C. Srl or an authorized dealer. Request for an RMA (Return Merchandise Authorization) and fill it in properly all the fields, before returning the module. Shipments arriving freight collect or without RMA number shall be subject to refusal.

Return freight charges following repair of items under warranty shall be paid by V.Y.C. Srl, shipping by standard ground carrier. In the event repairs are found to be non-warranty, return freight costs shall be paid by the purchaser. V.Y.C. Srl will provide repairing costs in case the merchandise is not under warranty.

V.Y.C. Srl limited warranty

V.Y.C. Srl warrants YACHTICA® products to be free from manufacturing defects in materials and workmanship under normal use for a period of 2 years from the date of purchase.

This warranty extends to products purchased directly from V.Y.C. Srl or an authorized YACHTICA® dealer.

V.Y.C. Srl shall not be liable to honor the terms of warranty if the product has been used in any application other than that for which it was intended or if it has been subject to misuse, accidental damage, modification or improper installation procedures

Furthermore, this warranty does not cover any products that has had the warranty void label altered, defaced or removed.

V.Y.C. Srl shall, at its option, repair or replace any product found defective, without charge for parts or labor. Repaired or replaced equipment and parts supplied under this warranty shall be covered only by the unexpired portion of the warranty.

Except as expressly set forth in this warranty, V.Y.C. Srl makes no other warranties, expressed or implied, nor authorizes any other party to offer any warranty, including any implied warranties of merchantability or fitness for a particular purpose. Any implied warranties that may be imposed by law are limited to the terms of this limited warranty.

This warranty statement supersedes all previous warranties.



www.yachtica.com

V.Y.C. S.r.l. reserve the rights to change the
specification and data herewith without a notice.
© 2020 by V.Y.C S.r.l. - All Rights Reserved.